

PROJECT:	UNIT TAG:	QUANTITY:
REPRESENTATIVE: _____	TYPE OF SERVICE:	DATE: _____
ENGINEER:	SUBMITTED BY:	DATE:
CONTRACTOR:	APPROVED BY:	DATE:
	ORDER NO.:	DATE:

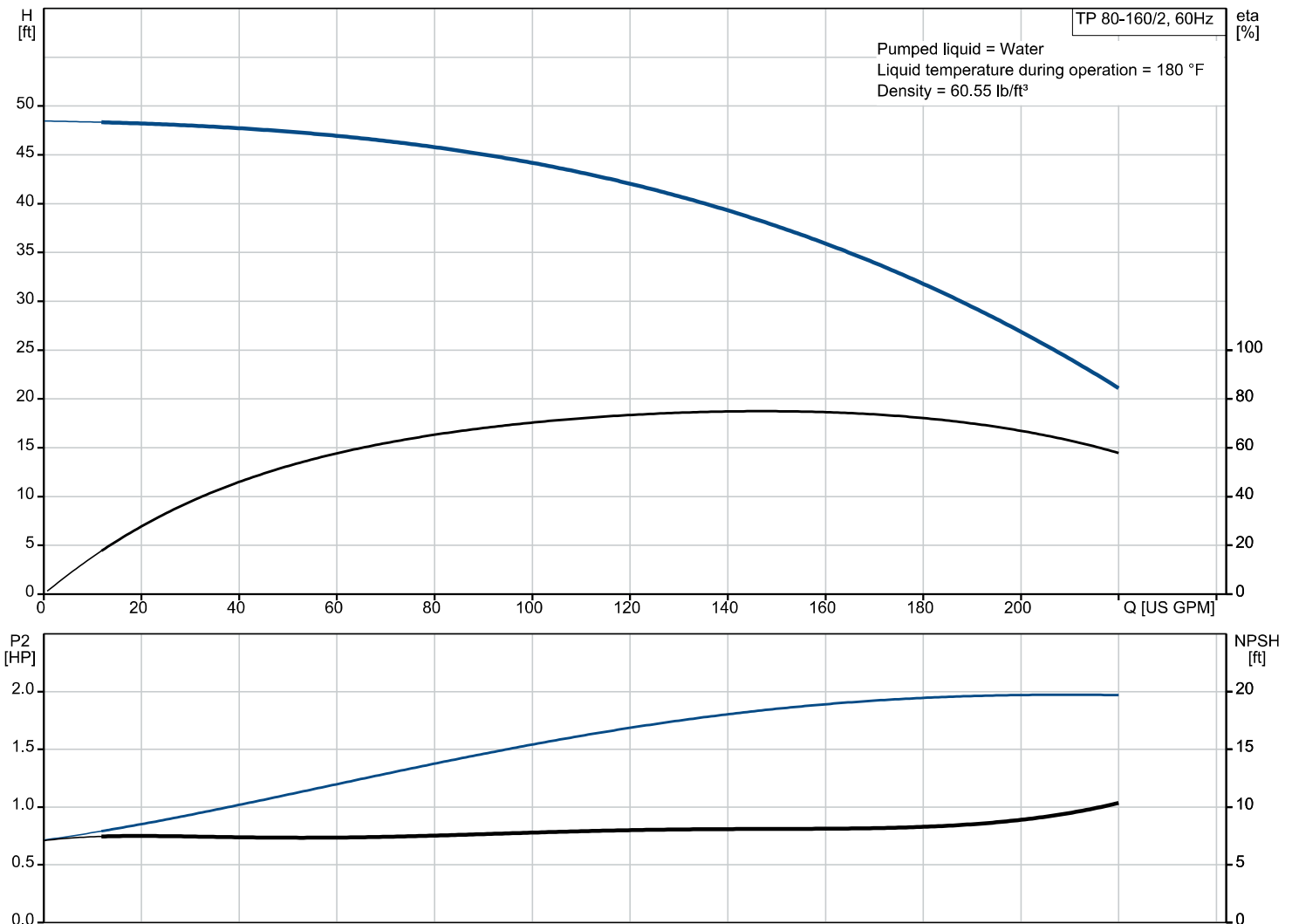


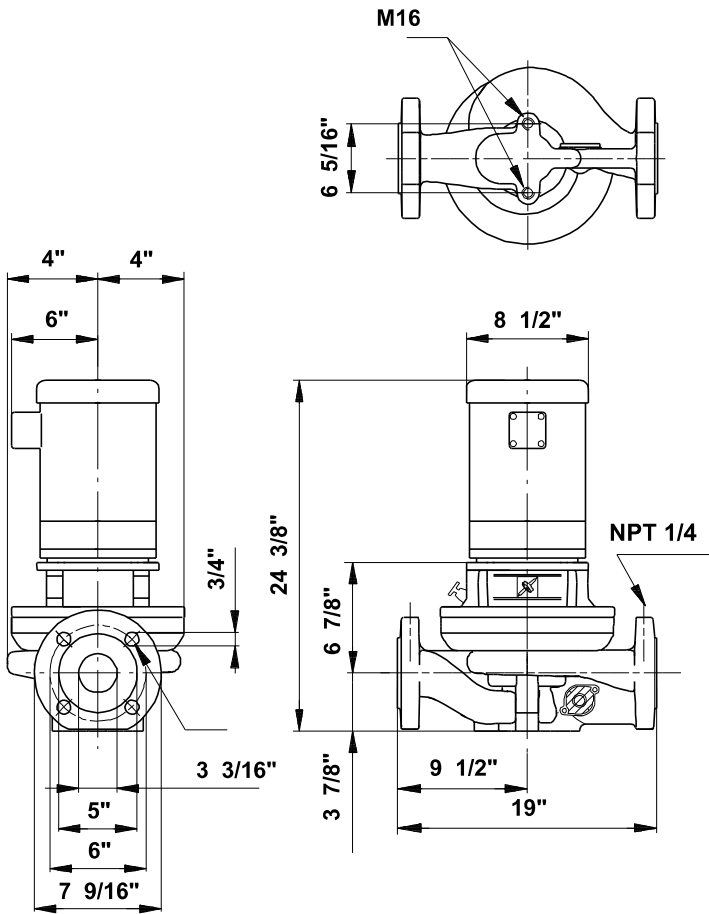
## TP 80-160/2 A-G-A-BUBE-IX2

Grundfos TP pumps are single-stage, close-coupled in-line centrifugal pumps with mechanical shaft seal and primely for applications such as heating/cooling/district energy. The pumps are fitted with fixed speed motors.

Note! Product picture may differ from actual product

Conditions of Service	Pump Data	Motor Data
Efficiency: %	Maximum operating pressure: 145.04 psi	Rated power - P2: 3 HP
Liquid: Water	Liquid temperature range: 5 .. 284 °F	Rated voltage: 115/208-230 V
Temperature: 180 °F	Maximum ambient temperature: 104 °F	Mains frequency: 60 Hz
NPSH required: ft	Approvals motor: UL Recognized Component, CSA	Insulation class: F
Specific Gravity: 0.972	Shaft seal: BUBE	Motor protection: None
	Flange standard: ANSI	Motor type: Baldor, TEFC
	Pipe connection: 3"	
	Product number: 96411831	





**Materials:**

- Pump housing: Cast iron
- Pump housing: EN-JL1040
- Pump housing: ASTM 25 B
- Impeller: Stainless steel
- Impeller: DIN W.-Nr. 1.4301
- Impeller: AISI 304

Qty.	Description
------	-------------

1	TP 80-160/2 A-G-A-BUBE-IX2
---	----------------------------



Product No.: [96411831](#)

Single-stage centrifugal volute in-line single-head pump:

- neck rings and impeller made of stainless steel
- cataphoresis treatment
- shell coupling
- top-pull-out principle for easy maintenance
- optimized hydraulics
- in-line design with opposite suction and discharge ports enabling mounting in pipework or on a concrete foundation
- corrosion resistant maintenance-free mechanical shaft seal.

The motor is a 1-phase AC motor.

Liquid:

Pumped liquid:	Water
Liquid temperature range:	5 .. 284 °F
Selected liquid temperature:	180 °F
Density:	60.55 lb/ft³

Technical:

Rated flow:	150 US GPM
Rated head:	37.73 ft
Actual impeller diameter:	3.56 in
Primary shaft seal:	BUBE
Approvals on motor nameplate:	UL Recognized Component, CSA
Curve tolerance:	ISO9906:2012 3B2

Materials:

Pump housing:	Cast iron EN-JL1040 ASTM 25 B
Impeller:	Stainless steel DIN W.-Nr. 1.4301 AISI 304

Installation:

Maximum ambient temperature:	104 °F
Maximum operating pressure:	145.04 psi
Flange standard:	ANSI
Pipe connection:	3"
Pressure rating:	125 lb.

Electrical data:

Motor type:	Baldor, TEFC
Rated power - P2:	3 HP
Mains frequency:	60 Hz
Rated voltage:	1 x 115/208-230 V
Service factor:	1,15
Rated current:	29/16-14,5 A
Rated speed:	3450 rpm
Insulation class (IEC 85):	F
Motor No:	84Z04014

Others:

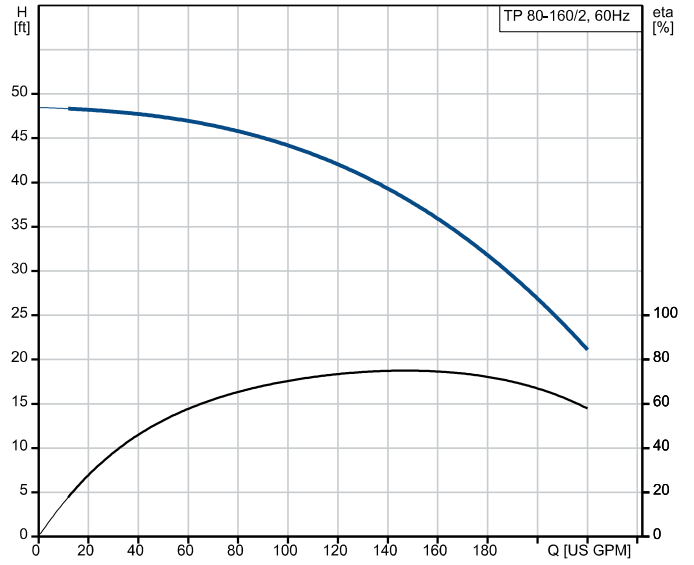


Company name:  
Created by:  
Phone:

Date: 02/07/2024

Qty.	Description
1	DOE Pump Energy Index CL: 0.89 Net weight: 152 lb Gross weight: 161 lb Shipping volume: 4.98 ft <sup>3</sup> Country of origin: US Custom tariff no.: 8413.70.2025

Description	Value
<b>General information:</b>	
Product name:	TP 80-160/2 A-G-A-BUBE-IX2
Product No:	96411831
EAN number:	5700390525422
Price:	
<b>Technical:</b>	
Rated flow:	150 US GPM
Rated head:	37.73 ft
Actual impeller diameter:	3.56 in
Primary shaft seal:	BUBE
Approvals on motor nameplate:	UL Recognized Component, CSA
Curve tolerance:	ISO9906:2012 3B2
Pump No:	96405273
<b>Materials:</b>	
Pump housing:	Cast iron
Pump housing:	EN-JL1040
Pump housing:	ASTM 25 B
Impeller:	Stainless steel
Impeller:	DIN W.-Nr. 1.4301
Impeller:	ALSI 304
<b>Installation:</b>	
Maximum ambient temperature:	104 °F
Maximum operating pressure:	145.04 psi
Flange standard:	ANSI
Pipe connection:	3"
Pressure rating:	125 lb.
<b>Liquid:</b>	
Pumped liquid:	Water
Liquid temperature range:	5 .. 284 °F
Selected liquid temperature:	180 °F
Density:	60.55 lb/ft <sup>3</sup>
<b>Electrical data:</b>	
Motor type:	Baldor, TEFC
Rated power - P2:	3 HP
KVA code:	H
Mains frequency:	60 Hz
Rated voltage:	1 x 115/208-230 V
Service factor:	1.15
Rated current:	29/16-14,5 A
Full load SF current:	31,8/18-16,9 A
Rated speed:	3450 rpm
Insulation class (IEC 85):	F
Built-in motor protection:	None
Motor No:	84Z04014
<b>Others:</b>	
DOE Pump Energy Index CL:	0.89
Net weight:	152 lb
Gross weight:	161 lb
Shipping volume:	4.98 ft <sup>3</sup>
Country code:	Namreg
Country of origin:	US
Custom tariff no.:	8413.70.2025



Pumped liquid = Water  
 Liquid temperature during operation = 180 °F  
 Density = 60.55 lb/ft<sup>3</sup>

