

Submittal Data

PROJECT:	UNIT TAG:	QUANTITY:
REPRESENTATIVE: _____	TYPE OF SERVICE:	DATE: _____
ENGINEER:	SUBMITTED BY:	DATE:
CONTRACTOR:	APPROVED BY:	DATE:
	ORDER NO.:	DATE:

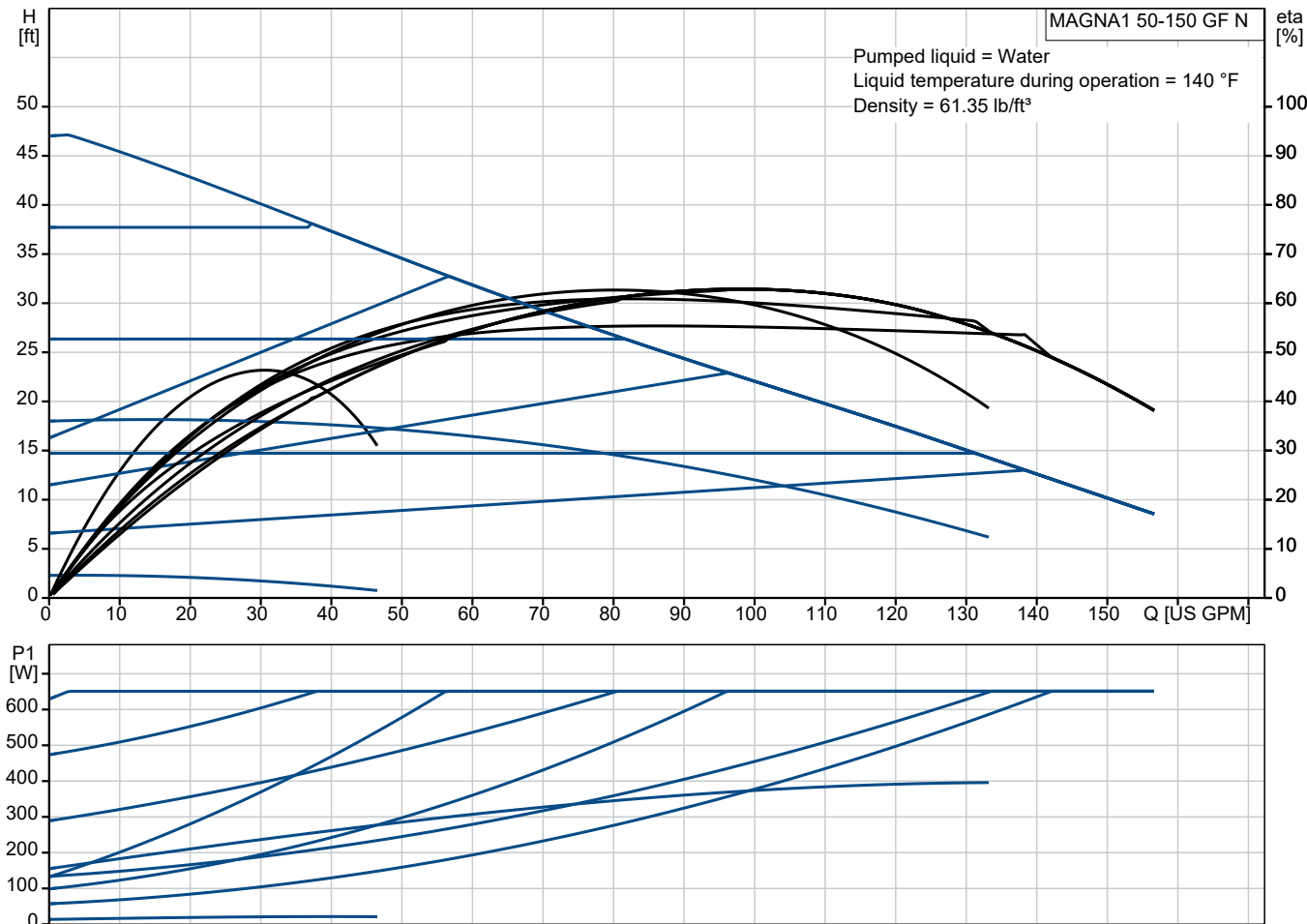
MAGNA1 50-150 GF N



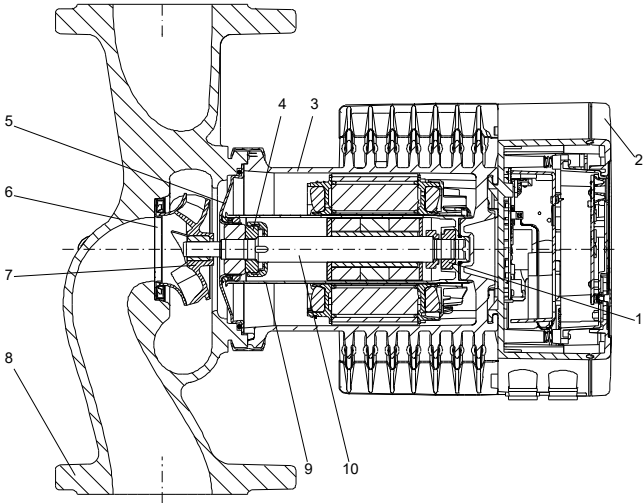
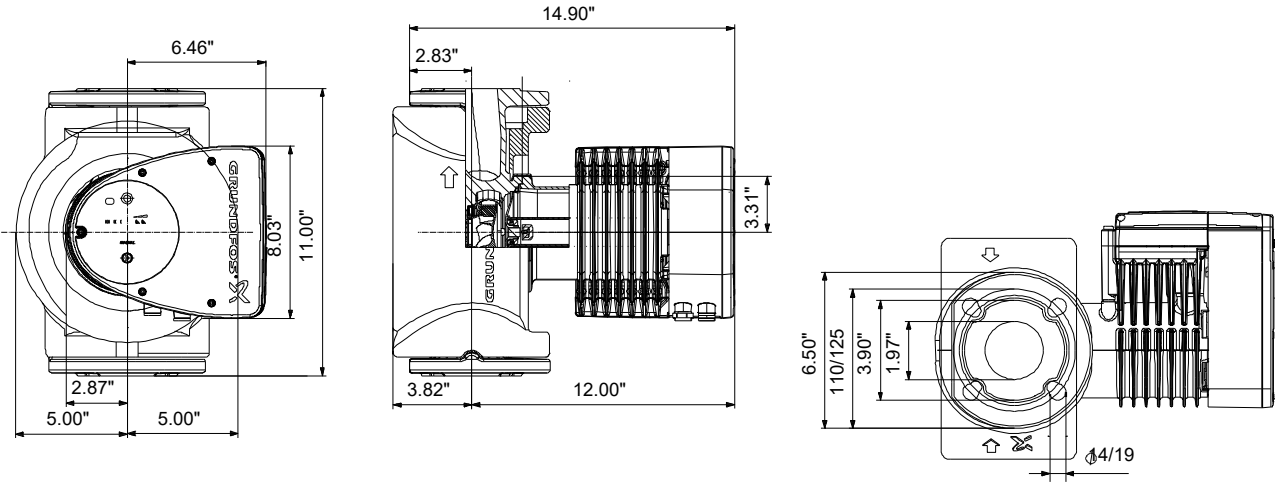
The Grundfos MAGNA1 N circulator pump is the stainless-steel variant of the MAGNA1 pump for applications where the liquid requires this, for example in domestic hot-water applications.

Note! Product picture may differ from actual product

Conditions of Service	Pump Data	Motor Data
Liquid: Water	Liquid temperature range: 14 .. 230 °F	Mains frequency: 60 Hz
Temperature: 140 °F	Maximum ambient temperature: 104 °F	Enclosure class: X4D
Specific Gravity: 0.985	Flange standard: GF	
	Pipe connection: GF53	
	Product number: 98126817	



Submittal Data



Materials:
Pump housing: Stainless steel
Pump housing: ASTM A351-CF8
Impeller: Composite